

C&M Imaging Network Newsletter

Edition 3

July 2020

In this edition:

Welcome to edition 3 of the Cheshire and Merseyside Imaging Network (C&MIN) newsletter. July's edition features a job opportunity that's become available for an information analyst to join the network, updates from both the network and programme workstreams and a summary of the key findings from the survey we sent out to the Cheshire and Merseyside imaging community in February.

Next edition:

In our next edition, we will continue to explore how we are helping to support the next phase in the response to COVID-19 as a Network and through our Programme workstreams, as health services continue to get back up and running, after closing temporarily at the height of the pandemic.

A message from David White, Clinical Lead for the Cheshire and Merseyside Imaging Network

Welcome to July 2020's edition of the Cheshire and Merseyside Imaging Network's bulletin. Again like the last bulletin, I would like to take the opportunity to thank everyone for their continued efforts during the COVID-19 pandemic.

The discussions around the restoration of services are a priority at this time and a lot of work is happening to try and adjust to the 'new normal'. We now know that regardless of whether there is a second wave of COVID-19, the impact on radiology services is considerable, with reduction in capacity due to new scheduling arrangements to allow for social distancing, machine cleaning and staff absences. To ensure that we are round the table with any discussions, we are working closely with both the national and regional teams.

We have received the feedback from the stakeholder survey we commissioned in February and March. This is really positive showing a strong appetite across the region for change.

Please take time to read through this issue of the bulletin, if you have any questions or suggestions for the network please contact joanne.morgan@liverpoolft.nhs.uk.

Best Wishes
David White, Clinical Lead
Cheshire and Merseyside Imaging Network

Staff changes and appointments across the Network

- We have had confirmation that East Cheshire NHS Trust no longer sits within the Cheshire and Merseyside Imaging Network, it is now within the Greater Manchester Network
- Dave Moran was appointed as radiology manager at Southport and Ormskirk Hospital NHS Trust on 1st June 2020
- Mrs Patricia Roche was appointed as deputy radiology manager at The Walton Centre NHS Foundation Trust on 1st July 2020
- Dr Athar Barakat will start his role as consultant neuro-radiologist at The Walton Centre NHS Foundation Trust on 19th August 2020.

New opportunity

The Cheshire & Merseyside Imaging Network is currently looking to recruit an information analyst, this is an opportunity to be an integral part of the transformation of imaging services across Cheshire and Merseyside. We are looking for an experienced candidate to work in the programme management office with clinical teams across Cheshire and Merseyside to support the data analytics programme. Knowledge of radiology systems would be beneficial. This will initially be a 12 months contract/secondment, for more information please visit <https://www.jobs.nhs.uk/> or contact amy.barton@liverpoolft.nhs.uk.

Network update

The planning for the restoration of imaging services is being led by NHS England and NHS Improvement, a regional North West team has been established and the Cheshire & Merseyside Imaging Network (C&MIN) are working with them closely. The allocation of new equipment to



support services post COVID-19 will be coming through this route. We have been allocated a computerized tomography (CT) scanner which is based at St Helens and Knowsley Teaching Hospitals NHS Trust's St Helens site, along with x-ray and ultrasound machines. The new CT scanner was allocated to the region in mid-May 2020 and went live at the end of June 2020, the speed of this turnaround is testament to the hard work of all those involved.

The clear sight of capacity and demand data is essential to support the justification of need for new equipment from Trust's in Cheshire and Merseyside. We have recently submitted a collaborative bid for home reporting stations to support with the resilience of radiology services being able to respond to the ongoing COVID-19 pandemic and restoration of planned care, including vital cancer screening and diagnostic services. This will ensure full coverage for home reporting for all reporting radiologist's in Cheshire and Merseyside.

Programme workstream updates

Cancer Optimal Pathway



C&MIN are working with Trusts to review current cancer pathways following COVID-19 and are supporting them to make any necessary changes.

Clinical Transformation

Clinical Transformation is continuing at pace. The network paediatric review is nearing a point where Trusts will have the opportunity to identify the model they may want to adopt to improve services for children across Cheshire and Merseyside.

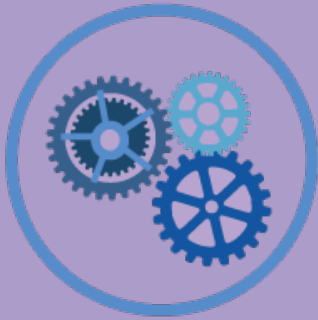
The options appraisal process looking at the future model of out of hours interventional radiology services in Cheshire and Merseyside has restarted following the COVID-19 outbreak. This project will improve access to services for patients and support the limited workforce. The supporting information for the scoring workshop is currently being gathered and a plan to hold it virtually is being worked up.



Clinical Transformation continued

The 'Cheshire and Merseyside Radiology Reporting Collaboration' project is underway, clinical and operational leads are in place (Dr Meenal Abhyankar from St Helens and Knowsley Teaching Hospitals NHS Trust and Linda Williams from The Clatterbridge Cancer Centre NHS Foundation Trust). The vision for this project is to develop a Cheshire and Merseyside wide radiology reporting collaborative to provide the vehicle for increasing reporting capacity within the NHS, whilst reducing/eliminating the use of private organisations. A survey has been distributed as a fact finding exercise to all radiology consultants to gauge opinion and find out more about what the current situation looks like with regards to additional work outside of contracted hours.

Data Analytics



Data and access to data is becoming much more of a necessity. Due to COVID-19, the need to have a clear picture of current demand and be able to compare it to the demand from previous years is essential. This will support the restoration of services across the network. The Cheshire and Merseyside Imaging Network are working with Trusts and the Picture archiving and communication system (PACS)/Radiology Information System (RIS) suppliers to make this data easily accessible and ensure it is presented in a user friendly way.

Digital Delivery

All the projects within the Digital programme are moving forward. The implementation of Brainomix our stroke artificial intelligence (AI) software is almost complete. We are now working with other areas in the country that are looking to use it.

The pilot sites for a PACS solution for other 'ologies' have been identified, neuro science at The Walton Centre NHS Foundation Trust, burns and plastic, dermatology and medical photography at St Helens and Knowsley Teaching Hospitals NHS Trust and the emergency department at Liverpool University Hospitals NHS Foundation Trust.



The work on implementing the technical solution for the collaborative reporting project is continuing; looking at shared workflow, which is a key piece of work that will help to support network working in the future.

The final project is the work to ensure that Cheshire and Merseyside are prepared to undergo the re-procurement of their PACS and RIS systems. We have been the recipient of a whole host of benefits from having a shared system across 9 of our 12 Trusts across Cheshire and Merseyside. This is something we are determined to build upon. The learning we have will be used to inform the output based specification for the re-procurement.

Procurement



The procurement delivery group has been set up and is meeting bi-monthly, Yvonne Shanks from the Walton Centre NHS Foundation Trust is in post as operational lead; however we are still looking for a clinical lead. If you are interested in the role, please contact joanne.morgan@liverpoolft.nhs.uk.

The single fixed price for outsourcing has been agreed and delivers considerable cost savings for Trusts within the network based on

Procurement continued

previous outsourcing levels. As a group we are looking at collaborative procurement of consumables with a view to identifying opportunities to obtain standardisation and reduce the price variation across the network.

The final project under the procurement programme is the review of maintenance and managed service contracts for imaging equipment across Cheshire and Merseyside. By looking at this as a network we again hope to increase standardisation and price variation across the region.

Workforce & Quality



The workforce and quality programme has been re-energised and a strategy group established. We have asked to be included in the pilot of the national HR passport which will support the radiology reporting collaboration. Discussions around the development of a recruitment and retention strategy will start imminently.

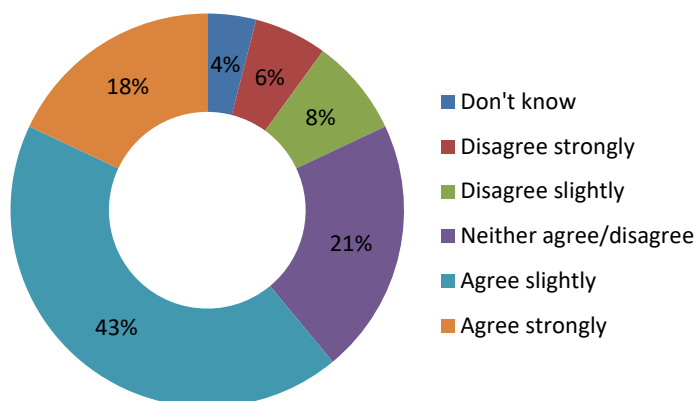
Dr Sumita Chawla from Liverpool University Hospitals NHS Foundation Trust has been identified as clinical lead and is driving forward the quality project, looking at aligning alert codes across the region.

Feedback from stakeholder survey

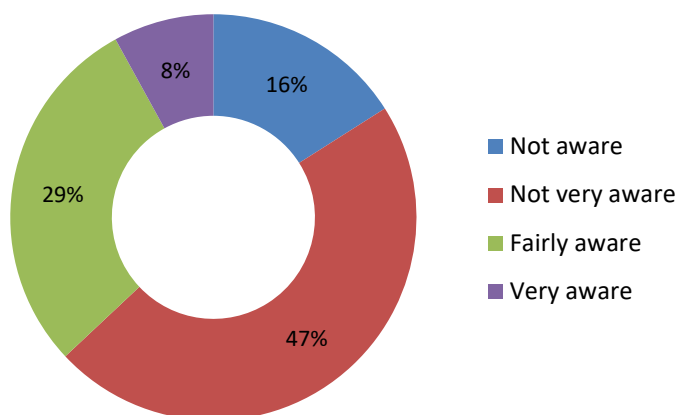
The network commissioned a baseline stakeholder survey to begin to develop an understanding of views from the imaging community across the Cheshire and Merseyside Imaging Network (C&MIN). Invitations which included a link to the online quantitative survey were circulated via email on 24th February 2020 and a follow up email reminding individuals to take part was sent out on 10th March 2020. In total, 150 questionnaires were completed, which we've analysed the findings of below.

How much do you agree or disagree that there is a need to change how imaging services are delivered in Cheshire and Merseyside?

There is a strong appetite for change to how imaging services are delivered in Cheshire and Merseyside. The results show that six out of ten (61%) of participants agreed that there was a need for change and only one in seven (14%) disagreed that change was necessary.



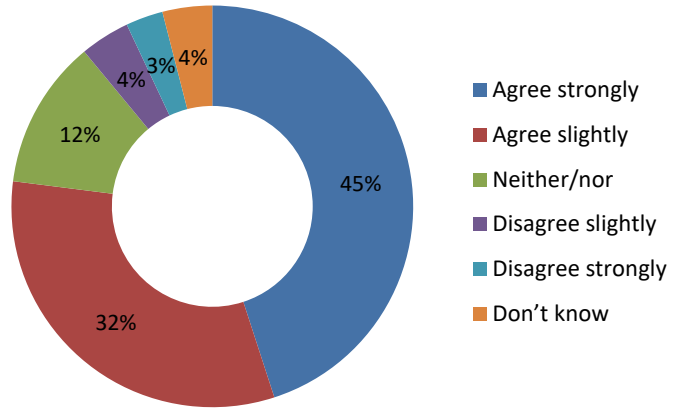
Which of the following phrases best describe how familiar are you with the network's plans?



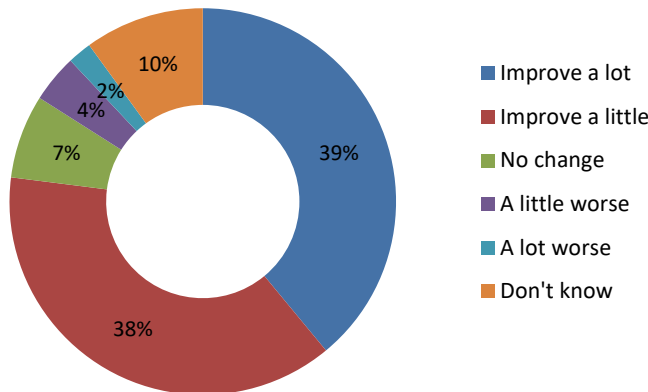
Awareness of the plans for the network was very high, with 84% of participants being aware of the plans. However, a detailed knowledge of the plans was much poorer, so there is clearly a need to communicate the detail of the plans better. Particularly as the results show that only 8% were very aware of the plans, 29% were fairly aware of the plans and almost half (47%) were not very aware of the plans.

Do you agree with the plans that there's a need for an imaging network to be established across Cheshire and Merseyside?

Overall evaluation measures demonstrated that participants felt that the network plans would be a positive improvement to imaging services. The results show that three quarters (77%) of those surveyed agreed with the plans overall.



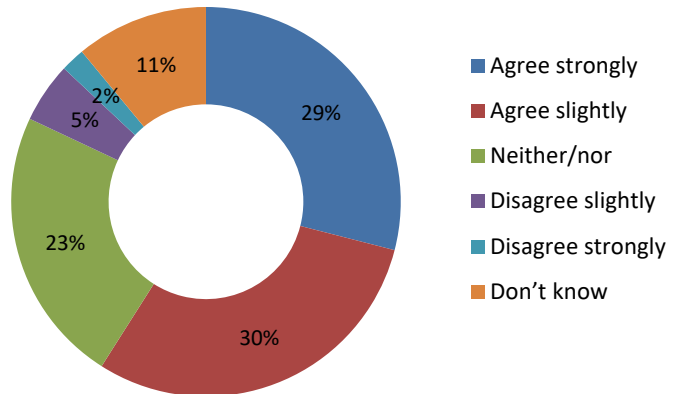
Which of the following statements best describe the overall effect you feel the imaging network plans will have on services across Cheshire and Merseyside?



The results showed that three quarters (77%) of those surveyed also agreed that the network plans would have a positive impact in helping to improve services.

How much do you agree or disagree that the network approach will help to ensure the sustainability of imaging services across Cheshire and Merseyside?

The impact of the network on sustainability was also viewed extremely positively, with six out of ten (61%) participants agreeing that the network would help sustainability. However, a quarter (23%) of those surveyed neither agreed nor disagreed, suggesting that they need to receive more communications around this issue to be persuaded on this point.



If you would like more information on the results of the stakeholder survey please contact joanne.morgan@liverpoolft.nhs.uk.

What would you like to see in future editions?

We want you to get the most out of this C&M Imaging Network newsletter, so please get in touch with the Cheshire and Merseyside Health and Care Partnership Communications and Engagement team and let us know what you'd like to see included in future editions, or if you have any questions about the Imaging Network and the six workstreams within it, by emailing us at: cm.partnership@nhs.net.

